

Reversible Motor 120W(φ 90mm)

120W Reversible Motor 120W(φ 90mm)

Motor 사양

Model		Output W	Voltage V	Frequency Hz	Poles	Duty	Starting Torque		Rated Load			Capacitor μF / VAC	
9RDG ⁺ -120F(-T): Gear Type Shaft 9RDD ⁺ -120F(-T): D-Cut Type Shaft 9RDK ⁺ -120F(-T): Key Type Shaft	kgfcm						N.m	Speed r/min	Current A	Torque kgfcm N.m			
Lead Wire Type	Terminal Box Type												
9RDG1(A)-120F□	9RDG1(A)-120F□-T	120	1φ 110	60	4	30min.	7.11	0.711	1550	2.50	7.54	0.754	30.0 / 250
9RDG2(D)-120F□	9RDG2(D)-120F□-T	120	1φ 220	60	4	30min.	6.42	0.642	1600	1.08	7.31	0.731	6.5 / 450
9RDGE-120F□	9RDGE-120F□-T	120	1φ 220	50	4	30min.	6.28	0.628	1250	1.10	9.35	0.935	6.5 / 450
			1φ 240				7.50	0.750		1.21	9.35	0.935	

- 1) 모터 모델명 * 자리에는 전압코드가, □ 안에는 부착되는 감속기의 모델 타입명이 들어갑니다.
- 2) 전압코드 A, D, E, G, K, L은 TP(Thermal Protector) 부착 사양입니다.
- 3) Gear Type Shaft는 감속기 부착용이며 D-Cut 및 Key Type Shaft는 모터 단독 사용시의 출력축입니다.

감속기 부착 시 최대허용토크

60Hz

Motor Model	Gearbox Model	감속비	2	3	3.6	5	6	7.5	9	10	12.5	15	18	20	25	30	36	40	50	60	75	90	100	120	150	180	200	
9RDG ⁺ -120FP	9PBK□BH 9PFK□BH	kgfcm	11.8	17.8	21.3	29.6	35.5	44.4	53.3	59.2	66.7	80.0	96.0	106.7	120.5	144.6	173.6	192.9	200.0	200.0	200.0	200.0	200.0	200.0	200.0	200.0	200.0	200.0
		N.m	1.16	1.74	2.09	2.90	3.48	4.35	5.22	5.80	6.53	7.84	9.41	10.45	11.81	14.17	17.01	18.90	19.60	19.60	19.60	19.60	19.60	19.60	19.60	19.60	19.60	19.60
9RDG ⁺ -120FH	9HBK□BH 9HFK□BH	kgfcm	-	17.8	21.3	29.6	35.5	44.4	53.3	59.2	66.7	80.0	96.0	106.7	120.5	144.6	173.6	192.9	241.1	289.3	300.0	300.0	300.0	300.0	300.0	300.0	300.0	300.0
		N.m	-	1.74	2.09	2.90	3.48	4.35	5.22	5.80	6.53	7.84	9.41	10.45	11.81	14.17	17.01	18.90	23.62	28.35	29.40	29.40	29.40	29.40	29.40	29.40	29.40	29.40

Motor Model	Gearbox Model	감속비	10	12	15	18	25	30	36	50	60	Motor Model	Gearbox Model	감속비	5	7.5	10	15	20	25	30	40	50	60	80
9RDG ⁺ -120FW	9WD□BL/□BR/□BRL	kgfcm	59.9	70.1	84.4	97.3	127.8	144.6	153.1	142.9	122.4	9RDG ⁺ -120FWH	9WHD□-030	kgfcm	25.4	36.8	47.3	66.6	84.2	96.4	112.2	137.9	157.8	163.3	132.7
		N.m	5.87	6.87	8.27	9.54	12.53	14.17	15.00	14.00	12.00			N.m	2.49	3.61	4.64	6.53	8.25	9.45	11.00	13.52	15.46	16.00	13.00

50Hz

Motor Model	Gearbox Model	감속비	2	3	3.6	5	6	7.5	9	10	12.5	15	18	20	25	30	36	40	50	60	75	90	100	120	150	180	200
9RDG ⁺ -120FP	9PBK□BH 9PFK□BH	kgfcm	15.1	22.7	27.3	37.9	45.4	56.8	68.2	75.7	85.3	102.4	122.9	136.5	154.3	185.1	200.0	200.0	200.0	200.0	200.0	200.0	200.0	200.0	200.0	200.0	200.0
		N.m	1.48	2.23	2.67	3.71	4.45	5.57	6.68	7.42	8.36	10.03	12.04	13.38	15.12	18.14	19.60	19.60	19.60	19.60	19.60	19.60	19.60	19.60	19.60	19.60	19.60
9RDG ⁺ -120FH	9HBK□BH 9HFK□BH	kgfcm	-	22.7	27.3	37.9	45.4	56.8	68.2	75.7	85.3	102.4	122.9	136.5	154.3	185.1	222.2	246.9	300.0	300.0	300.0	300.0	300.0	300.0	300.0	300.0	300.0
		N.m	-	2.23	2.67	3.71	4.45	5.57	6.68	7.42	8.36	10.03	12.04	13.38	15.12	18.14	21.77	24.19	29.40	29.40	29.40	29.40	29.40	29.40	29.40	29.40	29.40

Motor Model	Gearbox Model	감속비	10	12	15	18	25	30	36	50	60	Motor Model	Gearbox Model	감속비	5	7.5	10	15	20	25	30	40	50	60	80
9RDG ⁺ -120FW	9WD□BL/□BR/□BRL	kgfcm	76.7	89.8	108.0	124.5	163.6	170.0	153.1	142.9	122.4	9RDG ⁺ -120FWH	9WHD□-030	kgfcm	30.1	43.6	56.1	79.0	99.7	114.3	133.0	163.5	173.5	163.3	132.7
		N.m	7.51	8.80	10.58	12.21	16.04	16.66	15.00	14.00	12.00			N.m	2.95	4.28	5.50	7.74	9.77	11.20	13.03	16.02	17.00	16.00	13.00

- 1) 모터 모델명 * 자리에는 전압코드가 들어갑니다.
- 2) 감속기 모델명 □ 안에는 감속비가 들어갑니다.
- 3) 위의 표에서 색칠된 범위의 감속비를 선택했을 때 감속기의 출력축은 모터의 출력축과 같은 방향으로 회전합니다. 흰색 바탕 범위의 감속비에서는 감속기 출력축은 모터 출력축의 회전방향과 반대방향으로 회전합니다.
- 4) 회전속도(r/min)는 모터의 동기회전속도(50Hz:1500r/min, 60Hz:1800r/min)를 감속비로 나누어 계산합니다. 실제 회전속도는 부하의 크기에 따라 표시보다 2~20% 정도 느립니다.

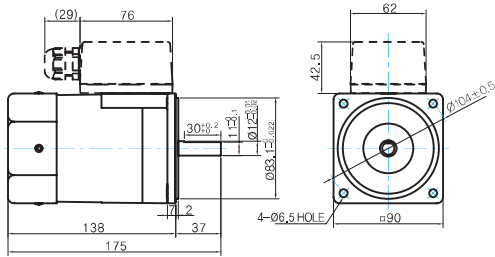
B AC Motors

Reversible Motor 120W(□90mm)

Dimensions

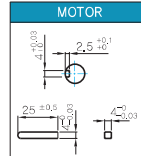
MOTOR ONLY

- MOTOR MODEL: 9RDD□-120F(-T) (GENERAL FAN)



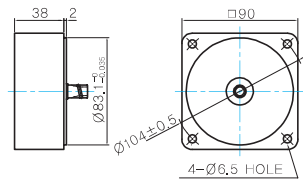
- MOTOR OUTPUT SHAFT
- KEY SPEC

MODEL	SPEC
D-CUT TYPE	
KEY TYPE	
9RDD□-120F	
9RDK□-120F	



중간감속기

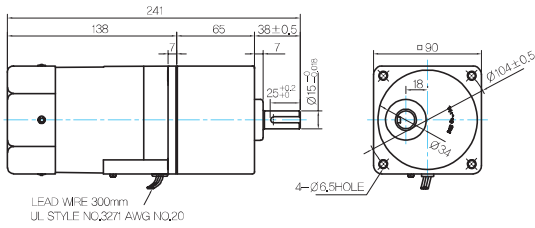
- MODEL: 9XD10□□



GEARED MOTOR

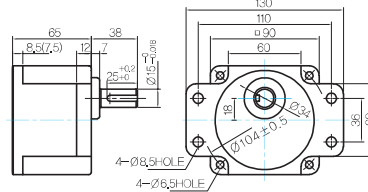
P TYPE GEARBOX

- MOTOR MODEL: 9RDG□-120FP (GENERAL FAN)



- GEARBOX MODEL: 9PBK□BH

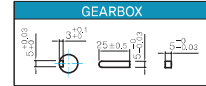
- GEARBOX MODEL: 9PFK□BH



- GEARBOX OUTPUT SHAFT

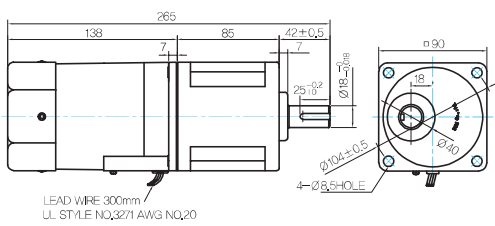
MODEL	SPEC
KEY TYPE	
9PBK□BH	
9PFK□BH	

- KEY SPEC



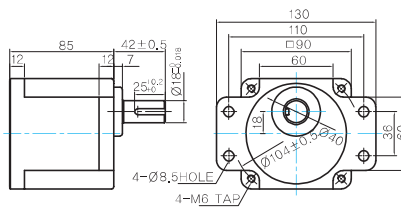
H TYPE GEARBOX

- MOTOR MODEL: 9RDG□-120FH (GENERAL FAN)



- GEARBOX MODEL: 9HBK□BH

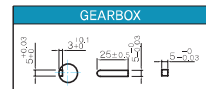
- GEARBOX MODEL: 9HFK□BH



- GEARBOX OUTPUT SHAFT

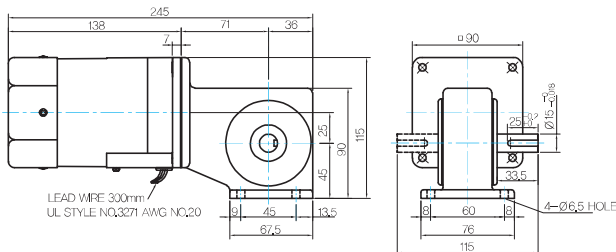
MODEL	SPEC
KEY TYPE	
9HBK□BH	
9HFK□BH	

- KEY SPEC



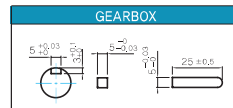
W TYPE GEARBOX

- MOTOR MODEL: 9RDG□-120FW (GENERAL FAN)



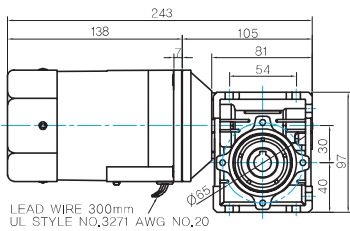
- GEARBOX MODEL: 9WD□BL/BR/BRL

- KEY SPEC

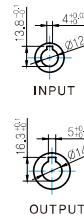
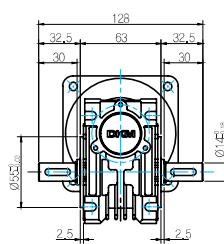


WH TYPE GEARBOX

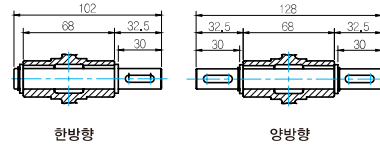
● MOTOR MODEL:
9RDG□-120FWH (GENERAL FAN)



● GEARBOX MODEL:
9WHD□-030



● SHAFT



한방향

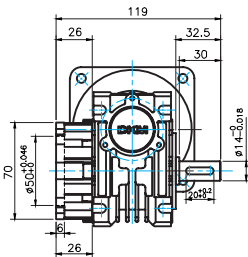
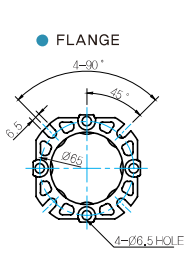
양방향

WEIGHT

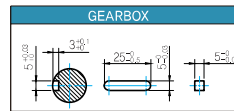
	PART	WEIGHT(Kg)
GEAR BOX	MOTOR	3.05
	9PB(F)K2BH - 9PB(F)K10BH	1.28
	9PB(F)K12.5BH - 9PB(F)K20BH	1.3
	9PB(F)K25BH - 9PB(F)K60BH	1.45
	9PB(F)K75BH - 9PB(F)K200BH	1.47
	9HB(F)K3BH - 9HB(F)K10BH	1.62
	9HB(F)K12.5BH - 9HB(F)K20BH	1.68
	9HB(F)K25BH - 9HB(F)K60BH	1.73
	9HB(F)K75BH - 9HB(F)K200BH	1.78
	9WD □BL/BR/BRL	1.0
9WHD□-030	1.2	
9XD10□□	0.6	

* 플렉 FLANGE와 SHAFT는 별매입니다.

● FLANGE



● KEY SPEC



Motor Images

9RDD□-120F	9RDD□-120F-T	9RDG□-120FP+9PBK□BH	9RDG□-120FP+9PFK□BH
9RDG□-120FH+9HBK□BH	9RDG□-120FH+9HFK□BH	9RDG□-120FW+9WD□BL	9RDG□-120FWH+9WHD□